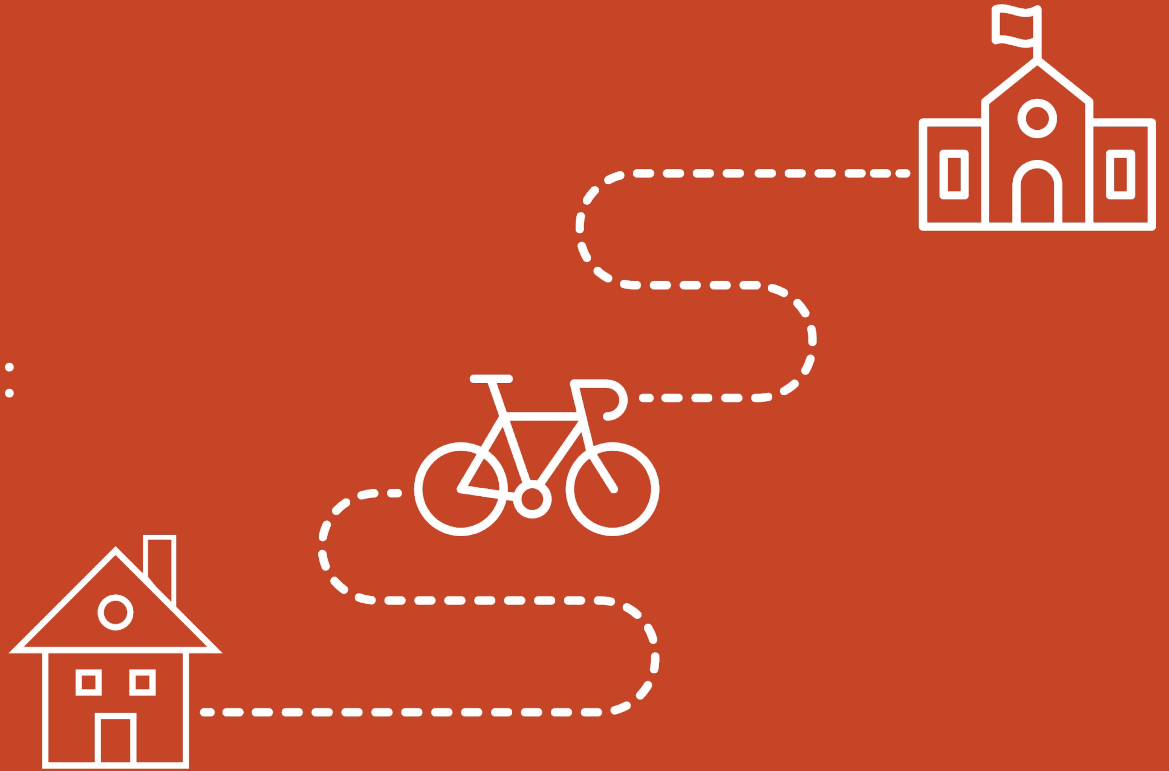


Hack your Routes:

UDI Workshop



What we will be doing today?

1. Assigning locations to groups.

2. Designing and creating a 3D model

3. Sharing 3D model with the class

4. Voting for the favorite idea!



Location 1: 12 Avenue

Location 2: 13 Avenue

Location 3: 10th Street

Location 4: Intersection
13 Ave. and 10th St.

Location 5: 8th Street



Team 12 Avenue



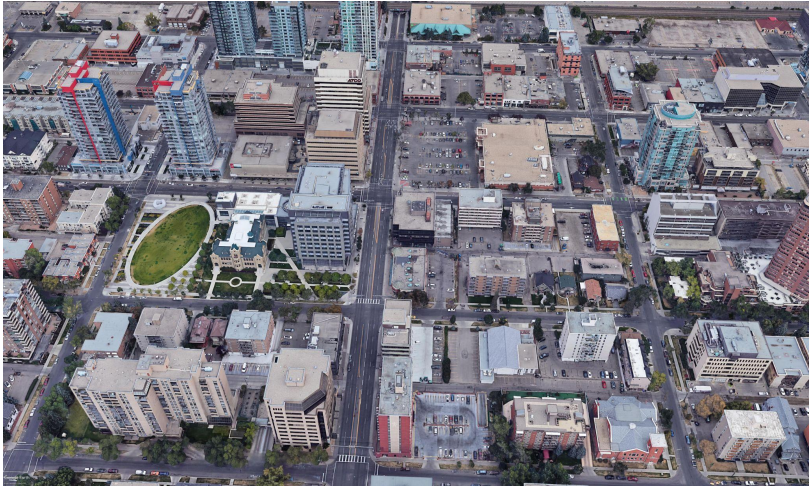
Team 13 Avenue



Team 10th Street



Team Intersection



Team 8th Street



1: Team 12 Avenue

2: Team 13 Avenue

3: Team 10th Street

4: Team Intersection

5: 8th Street



A shared-street with furniture to sit and play.
Rio Grande do Sul, Brazil

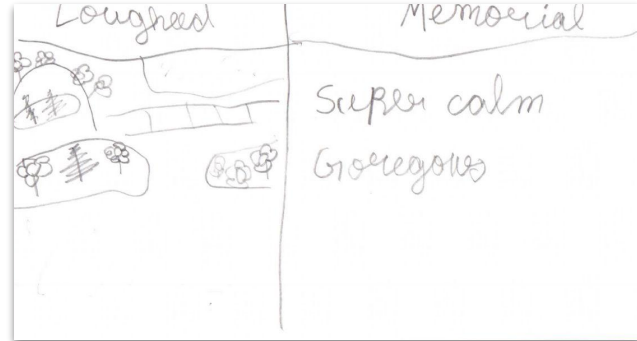
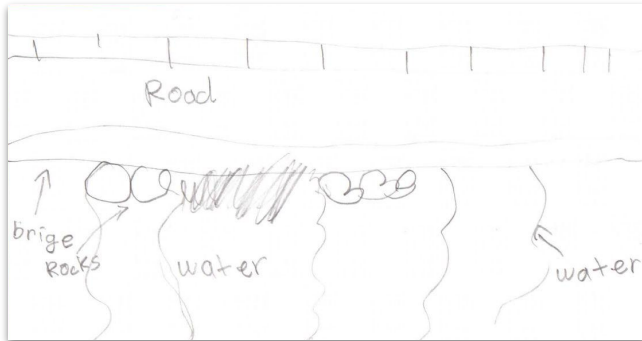
Elastic beds.
Rotterdam, The Netherlands

A play street in a school zone.
Barcelona, Spain


Playing in the nature.
Frederiksborg, Denmark

Furniture to climb!
Seattle, USA


Curb extensions.
San Jose, Costa Rica



louise bright
bow river
- cool
- long
- like a maze



I like to
~~to~~ go to
thomson playground
because its
really fun
to play on



Favorite Routes/Spaces Homework Sheet 1

What is your favourite place to walk/bike?
OR What is your favourite outdoor space?
(Describe in words)

My favour
ite is
Sweet
townes
park



What does it look like?
(Draw it!)

What does it sound like?
(Describe in words)

the River
and
is like
so nice



What does it smell like?
(Describe in words)

fish
beer
food

What does it feel like?
(Describe in words)

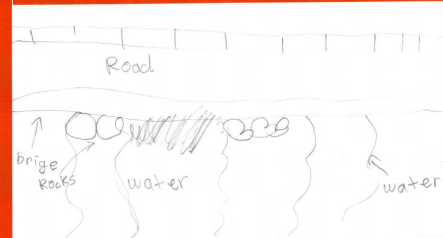
So calm
Peaceful
and
relaxing

Sustainable Calgary

Favorite Routes/Spaces Homework Sheet 1

What is your favourite place to walk/bike?
OR What is your favourite outdoor space?
(Describe in words)


my favorite outdoor
space is prince's
island Park



What does it look like?
(Draw it!)

What does it sound like?
(Describe in words)

it sounds like
all the trees
and leaves



What does it smell like?
(Describe in words)

I smell the
amazing

What does it feel like?
(Describe in words)

It feels like
Peaceful,

Sustainable Calgary

Your favorite places to walk/bike:

Prince's Island Park, Louise Bridge, Central Memorial Park, Lougheed House, Thompson Park, Barb Scott Park, Bow River, Bowness Park and Banff.

Why?

They are peaceful and quiet places. Also they are fun and full of people. They smell like flowers and food. They have areas where you can talk, play, swim and where you can hear bikes pedaling. Where you can also hear the sound of leaves rustling in the wind.

While you are designing, keep in mind...

Who is going to use your design and **how**?

What activities are going to happen there?

What design features can be included so you feel warm, safe, entertained, and happy? and **where**?

Let's build the model! 😊

(You have 30 min. to redesign your location)

Describe your ideas and share with us...

Where is your design work being done?

What are you trying to change at this location?

What are you proposing as design changes?

Why are you proposing those design changes?

Who will be using this space you've re-designed?

How will the use of this space change as a result of the changes you're proposing?

Time to vote! Which proposal is your favourite? (You can't vote for your own)

Thank you! 😊